



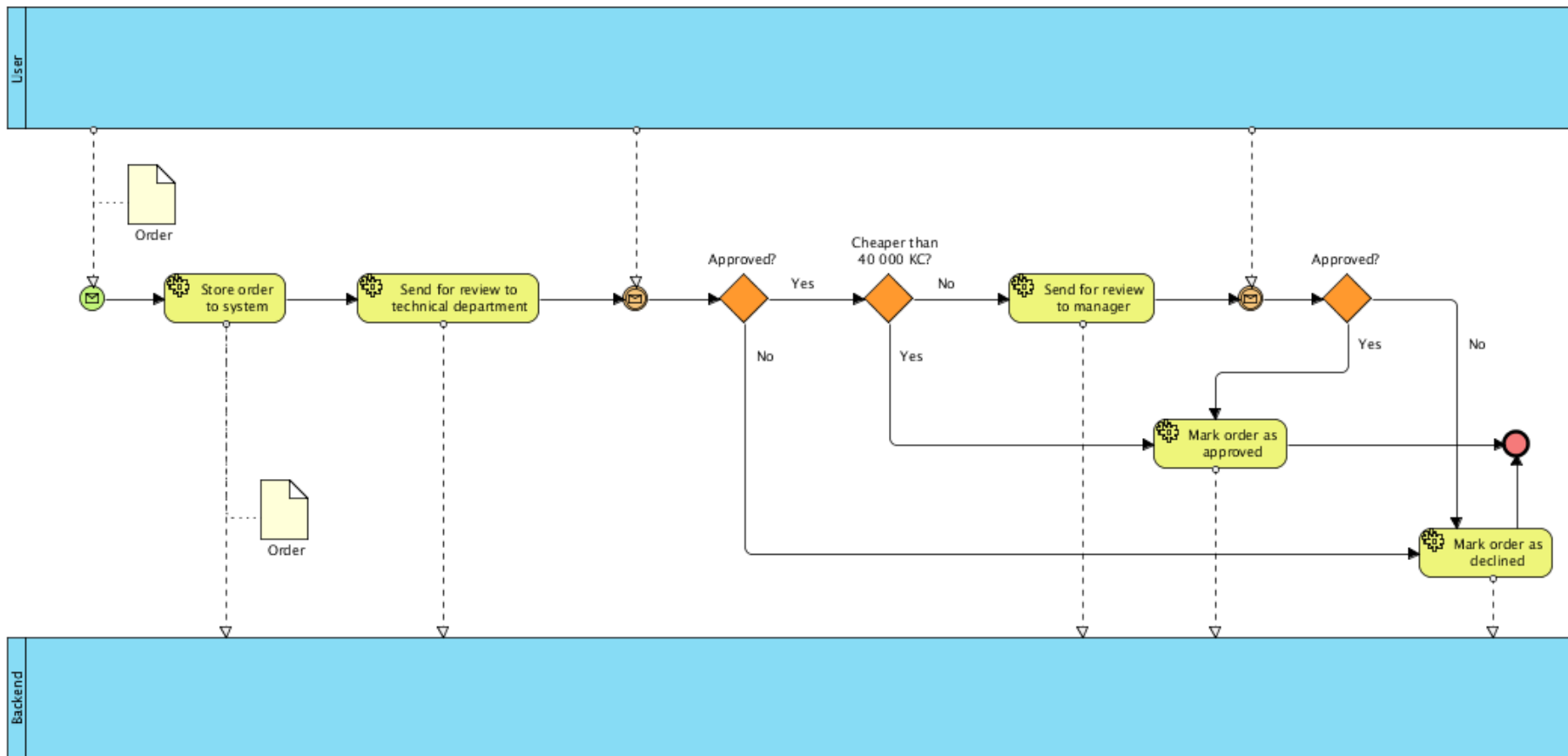
# RiftSaw Workshop

Marek Baluch  
mbaluch@redhat.com  
November 2011

# Agenda

- Order Approve process
  - Invoke a partner service
  - Correlate incoming requests
  - If-then-else
- Asynchronous Echo
  - Asynchronous partner invoke

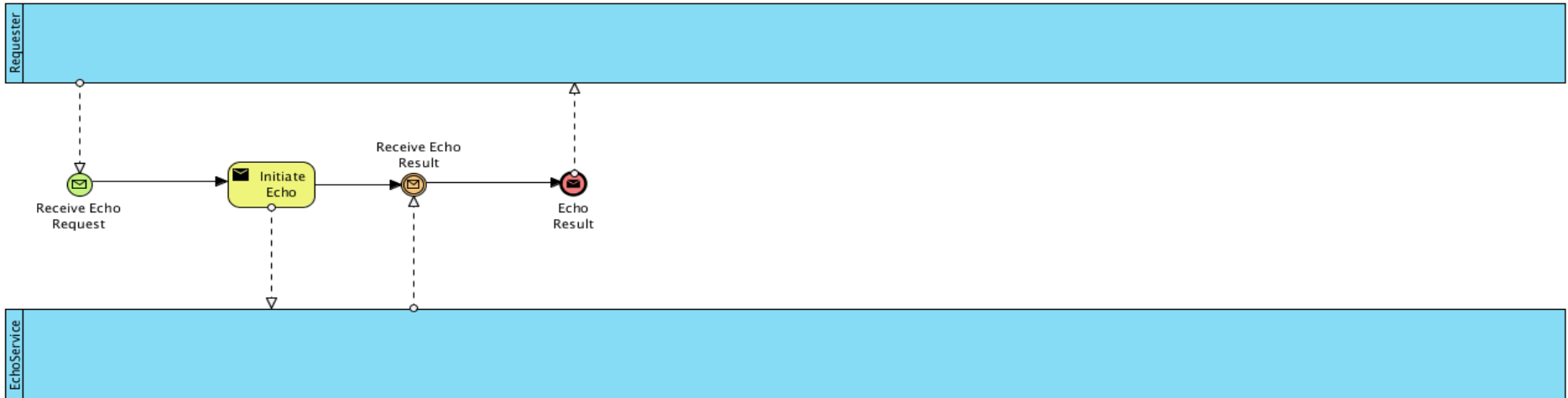
# Exercise 1 – Order Approval Process



# Exercise 1 – Description

- Process inbound operations
  - createOrder(orderer, item, price, quantity)
  - techDecide(orderID, decision - “approved” / ”declined”)
  - findirDecide(orderID, decision - “approved” / ”declined”)
- Process outbound operations
  - createOrder(orderer, item, price, quantity)
  - setApprover(orderID, approverRole - “tech” / “findir”)
  - setOrderState(orderID, newState - “APPROVED” / “DECLINED”)

# Exercise 2 – Asynchronous Echo



# What's next?

- Resources
  - WS-BPEL 2.0 Specification and Primer
  - Samples shipped with RiftSaw
  - Google ;-)
- Questions?
- Contact
  - [mbaluch@redhat.com](mailto:mbaluch@redhat.com)