

Deploy Apache Camel in the cloud

James Strachan

FuseSource
integration everywhere

Your speaker today

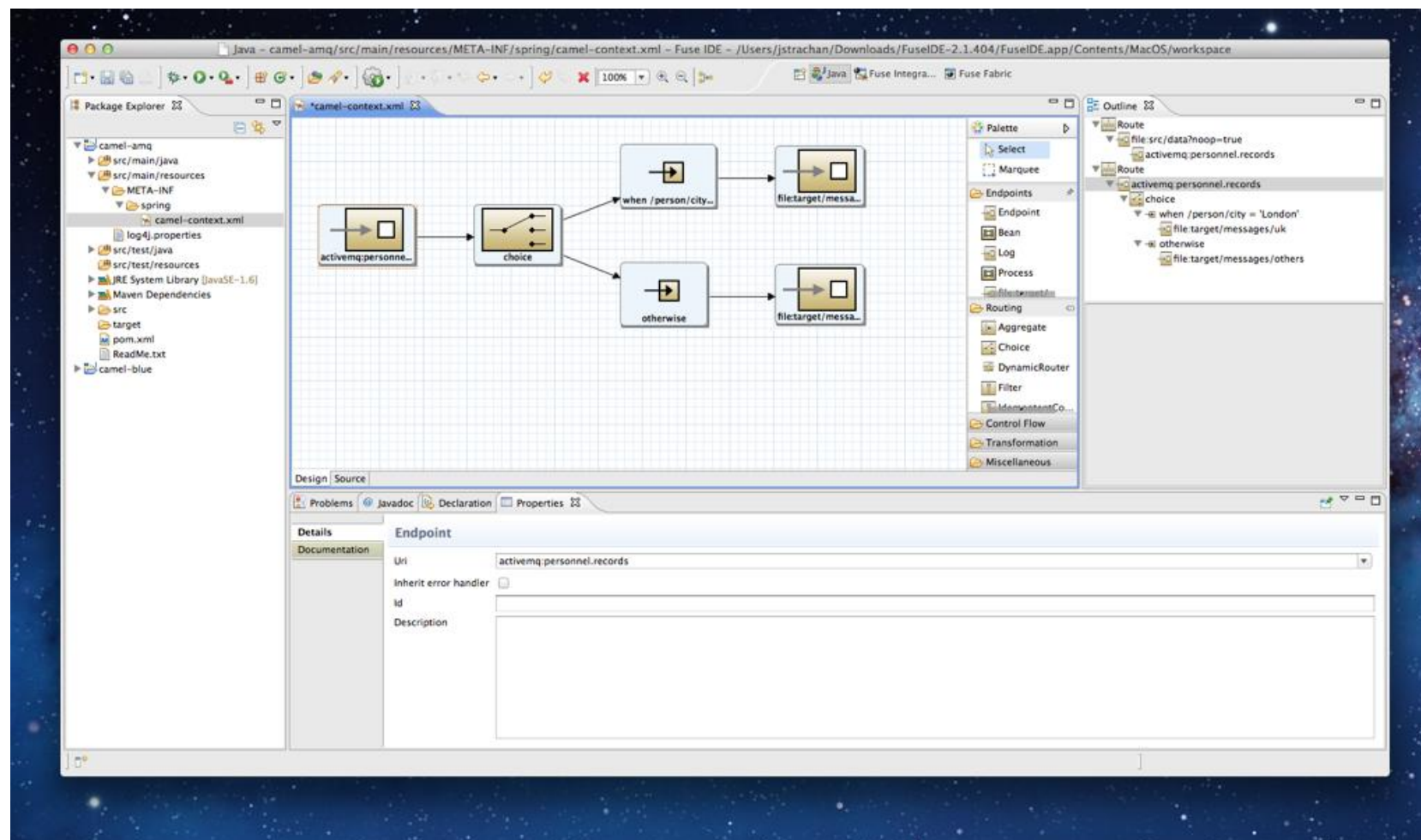
- James Strachan
 - james@fusesource.com
 - twitter: @jstrachan
 - blog: <http://macstrac.blogspot.com/>
- Software Fellow at FuseSource
 - leaders in open source integration & messaging
 - we provide training, consulting, support, distributions & tools for open source integration software
- Open Source hacker
 - created the Groovy programming language
 - created the first version Apache Camel
 - co-founder of
 - Apache ActiveMQ, ServiceMix, Geronimo
 - Scalate

Agenda

- lets get riding!
- start local first
- stand alone Fuse ESB
- introduce Fuse Fabric
- lets surf them clouds!

Fuse IDE: the fastest way to get riding!

- eclipse based tool for Apache Camel & ActiveMQ etc
 - create projects, edit routes, run stuff, visualise, trace & diagnose



- <http://fusesource.com/>

Lets get started...



Clouds!



Why Fuse Fabric?

- installing, configuring, running integration applications is hard
 - ⑩ in the cloud its even harder
- we want to make it easy!

What is Fuse Fabric?

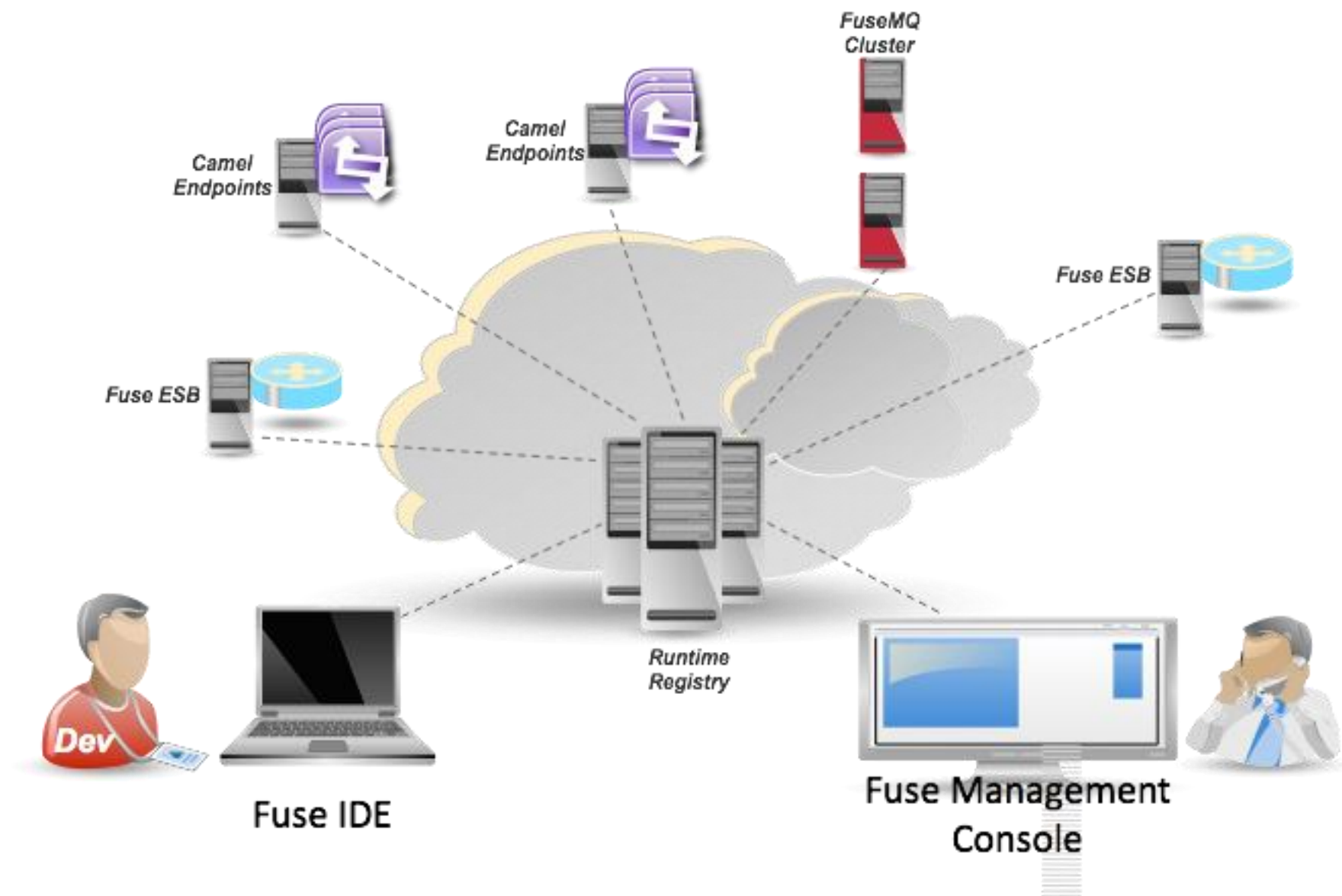
- open source iPaaS
 - ⑩ for running your integration solutions on any kind of computing resources, IaaS, PaaS etc
 - ⑩ Apache License 2.0
 - ∞ no catches or hidden bits :)
 - ⑩ small & lightweight
- <http://fuse.fusesource.org/fabric/>

Fuse Fabric: What does it do?

- distributed configuration
- discovery of services, endpoints and message brokers
- load balancing and failover
- provisioning of features across machines
- easy elastic scaling of services

FuseFabric overview

Fuse Fabric



Fabric Tools

- Fuse Shell
- Fuse IDE
- Fuse Management Console

Fuse Fabric Architecture

- Registry
- Profiles
- Containers

Fuse Fabric demo...

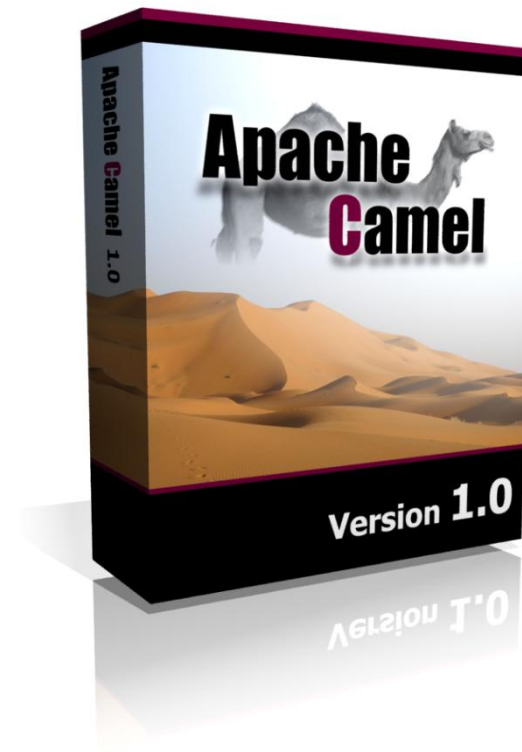


Summary

- Camel rocks!
 - use Fuse IDE to get riding faster and easier
 - ⑩ Deploying to Fuse ESB is a click or two away
- Use Fuse Fabric if you have > 2 JVMs to configure/provision
 - ⑩ start with a small number of simple profiles
 - ⑩ add machines & profiles as your needs fit

What should I do next?

- Download Fuse IDE & Fuse ESB
 - <http://fusesource.com>
- Ride that Camel
 - <http://camel.apache.org/>
- Attend the Fuse Management Console talk tomorrow! :)
- Don't get the hump!



Any Questions?



- twitter: @jstrachan #fusenews
 - <http://fusesource.com>